



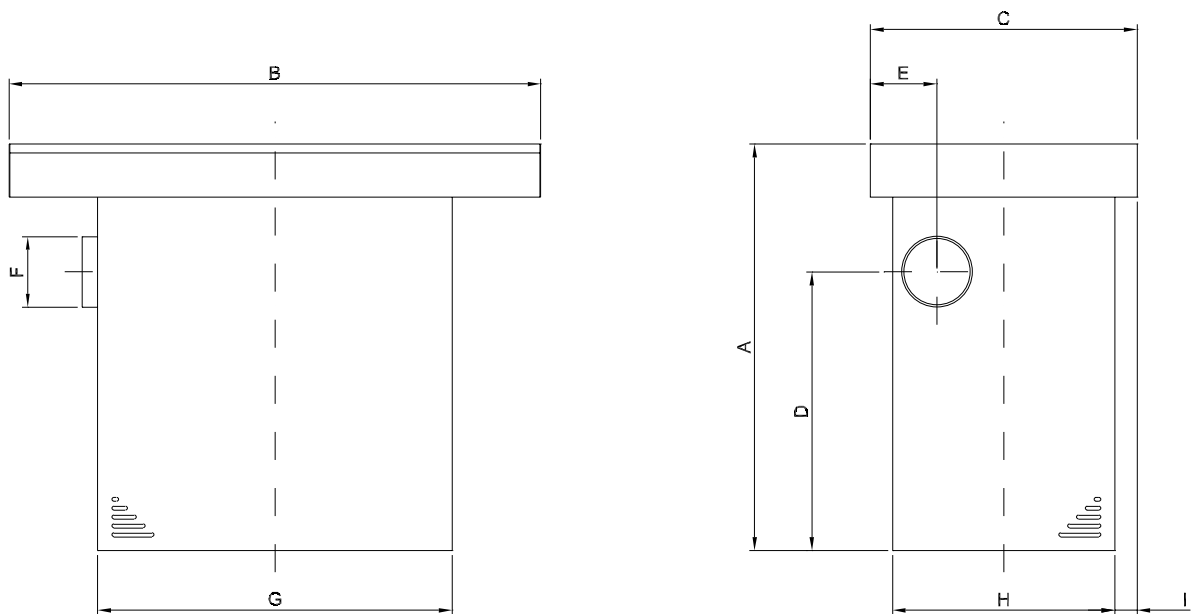
LB 800 - 1200

- Extraction by table plate and floor extraction
- Loosely placed perforated enamelled steel table plate
- With hidden distribution chamber
- Suitable for heavier gases
- Table built in 1.5mm steel plate

Application:

Glueing
Hand-enamelling (reduced application)
Glass-fibre production

Type	Order no.	ΔP [Pa]	Air volume [m³/h]	Weight [kg]
LB 800/800	02 351 000	500	1000	60
LB 1200/600	02 356 000	500	1000	85



Type	Order no.	A	B	C	D	E	F	G	H	I
LB 800/800	02 351 000	920	804	804	645	251	ø160	503	503	151
LB 1200/600	02 356 000	920	1204	604	630	151	ø160	803	503	51

Colour: RAL 5007/7011 (structure)