



Side channel blower for application at extraction from continuous high-pressure processes, such as cleaning, suction hoses for hand-held tools, welding guns and the like.

Transported air must be filtered with minimum class F9 or dust class M.

Work area:

Max. vacuum: 35,000Pa

Max. air volumen: 1,234m³/h

Temperature:

Extracted air by side channel blower = max. 40°C

Ambient temperature (min./max.) = -15°C - +40°C

Construction:

Wheel/cabinet: Cast aluminium cabinet and wheel.

Bearing: Life under normal circumstances: 20,000 hours or 3 years

Motor: Electro motor made in protection class IP55
 Class F-isolated motor
 IE3 motor
 Standard equipped with bimetallic sensor
 Suitable for frequency converter operation

Side channel blower ...

- may be used in 50Hz and 60Hz configuration
- uses both transport air as well as external air supply for cooling of blower.
- can be mounted in two directions, either on foot base or directly on blower cabinet.

Standard 50Hz:

Type	Order no.	Voltage [VAC]	Sound pressure level [dB]	Weight [kg]	Effect [kW]	Current [Amp]
K06-MS	08 068 100	3x400	70	37	3.0	6.3
K08-MS	08 069 100	3x400	77	70	5.5	11.1
K08-MS	08 071 100	3x400	77	84	7.5	15.7
K11-MS	08 072 100	3x400	80	95	9.2	17.8
K11-MS	08 073 100	3x400	80	102	11.0	21.7
K12-MS	08 074 100	3x400	85	132	18.5	36.5

With additional order no. for 60Hz:

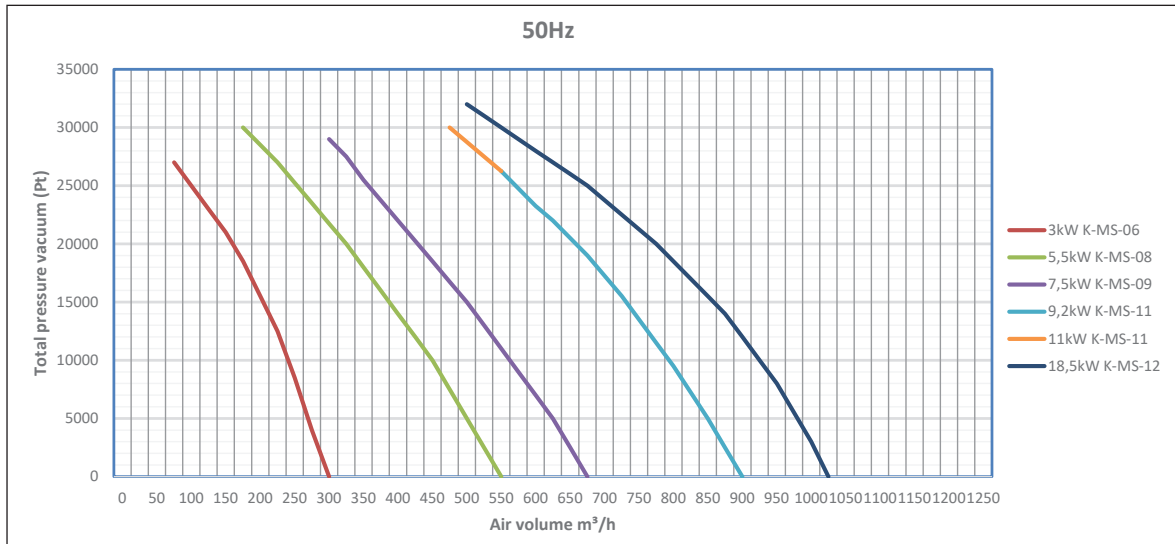
Type	Order no.	Voltage [VAC]	Sound pressure level [dB]	Weight [kg]	Effect [kW]	Current [Amp]
K06-MS	08 068 100	3x400	72	37	3.5	6.2
K08-MS	08 069 100	3x400	79	70	6.5	11.1
K08-MS	08 071 100	3x400	79	84	9.0	15.3
K11-MS	08 072 100	3x400	82	95	11.0	17.9
K11-MS	08 073 100	3x400	82	102	13.0	21.2
K12-MS	08 074 100	3x400	87	132	22.0	36.5



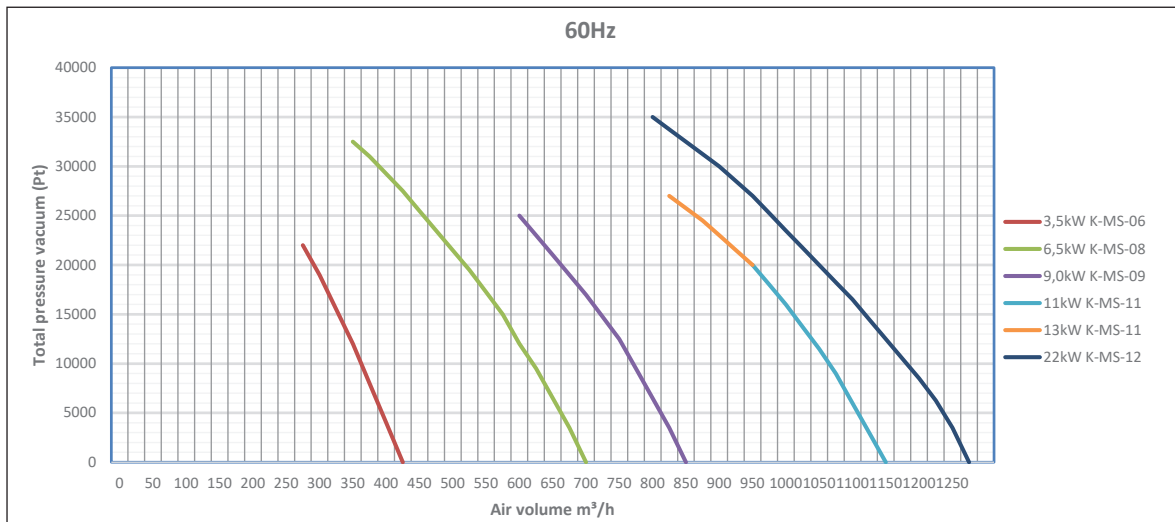
Further is available:

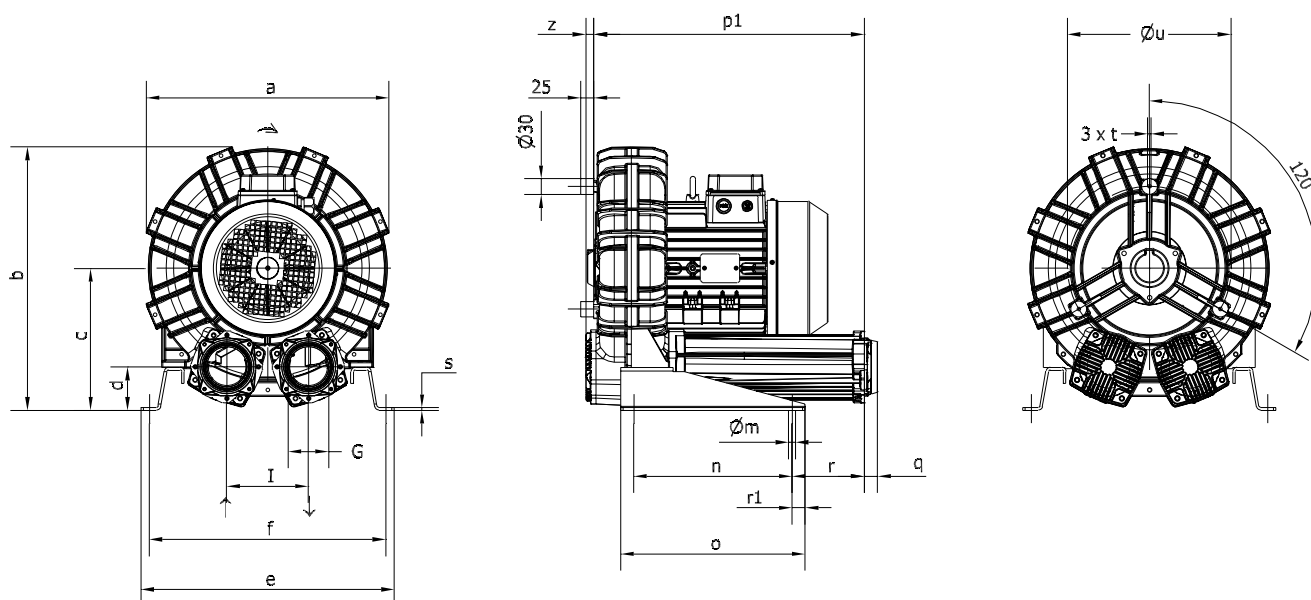
- Vacuum limiter/safety valve type VRL
- Sound enclosure for side channel blower type VB-R

50Hz:



60Hz:





Type	Order no.	a	b	c	d	e	f	G	l	m	n
K06-MS	08 068 100	376	393	205	54	325	290	2"	125	15	140
K08-MS	08 069 100	457	498	269	82	480	448	3"	155	13	300
K08-MS	08 071 100	492	561	315	96	510	478	4"	182	13	300
K11-MS	08 072 100	542	603	332	91	540	508	4"	200	13	300
K11-MS	08 073 100	542	603	332	91	540	508	4"	200	13	300
K12-MS	08 074 100	548	606	332	91	540	508	4"	200	13	300

Type	Order no.	o	p1	q	r	r1	s	t	u	z
K06-MS	08 068 100	265	334	18	85	19	4	M8	240	19
K08-MS	08 069 100	350	512	25	137	25	5	M8	310	16
K08-MS	08 071 100	350	586	25	199	25	5	M8	360	16
K11-MS	08 072 100	350	596	25	204	25	5	M8	390	16
K11-MS	08 073 100	350	596	25	204	25	5	M8	390	16
K12-MS	08 074 100	350	599	25	204	25	5	M8	390	16