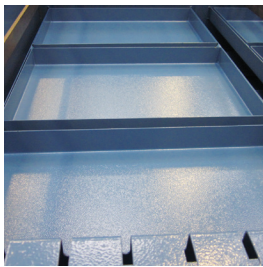


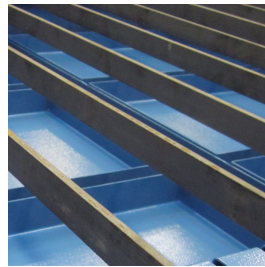
PB 550 - 2600

- Manual cutting table
- Cutting table with water boxes
- Air distribution chamber
- Easy removable comb system
- Profile in cutting grid 30x6mm
- Earth connection outside on table
- Max. table weight load: 25mm black steel plate

For special purposes other dimensions and designs are available



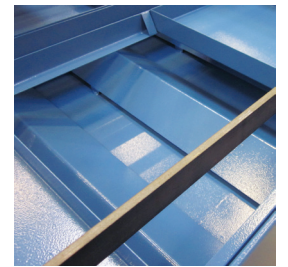
Water box
Water boxes for absorbed dust during cutting.



Cutting grid
30x6mm cutting grid. Easy to change.



Earth connection
Earth connection for application in connection with plasma cutter.



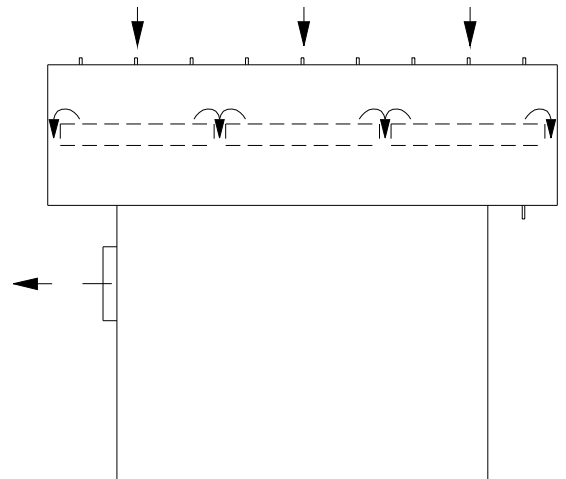
Dross
Dross protection, air distribution (under box).

Type	Order no.	Grid	Standard grid distance	Standard height	Outlet [ø]	Weight [kg]	Air volume/ ΔP [m ³ /h] / [Pa]	Max. table opening area (for 1.5 m/s)
PB 550	02 151 000	550 x 1100	114	913	ø160	69	1500/800	45%
PB 1100	02 156 000	1100 x 1100	114	913	ø200	120	3000/800	45%
PB 2100	02 157 000	2100 x 1100	114	912	ø200	200	3000/800	24%
PB 2600	02 158 000	2600 x 1350	114	909	ø200	280	3000/800	16%

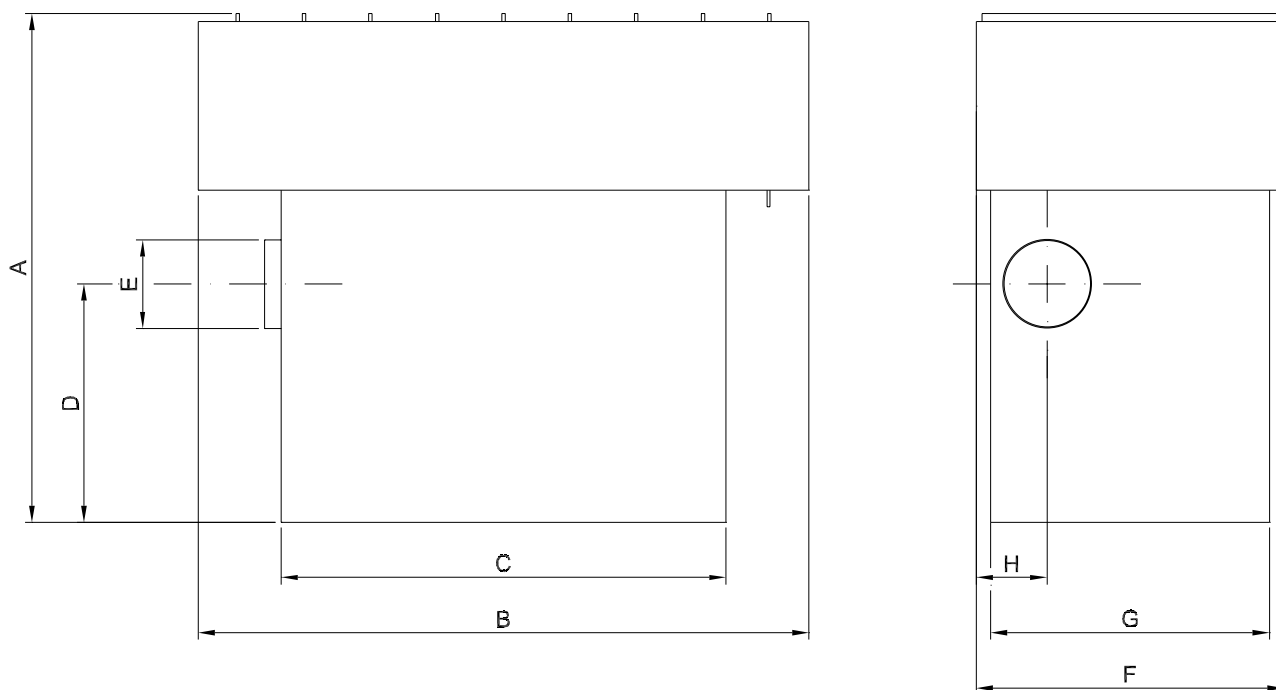
Draft illustrates air flow

Air is extracted by the ribs in the table grid (table top) down between the water boxes that distributes the extraction equally.

The air is hereafter collected in the connection piece for central extraction.



Colour: RAL 5007 (structure)



Order no.	Type	A	B	C	D	E	F	G	H
02 151 000	PB 550	990	1100	800	430	∅160	550	500	128
02 156 000	PB 1100	990	1100	800	430	∅200	1100	1000	550
02 157 000	PB 2100	990	2100	1800	430	∅200	1100	1000	550
02 158 000	PB 2600	990	2600	2300	430	∅200	1350	1000	550