



Centrifugal fan with closed fan wheel that is used at source extraction from air pollutant or chip making work processes. The transported air may not contain adhesive or sticky fumes or dust.

**Work area:**

Max. pressure: 3,100Pa

Max. air volume: 10,500m³/h

Max. dust volume: 5g/m³, non-sticky

Max. particle size: 5x5x5mm, non-sticky

Temperature: Extracted air (transport air in fan) = max. 60°C

Ambient temperature: max. 40°C

Fan order no.	Achieved efficiency	Measurement category	Efficiency category	Efficiency grade	VSD	Production year	Manufacturer page	Model number/type	Rated motor power input, flow rate and vacuum at optimal efficiency			Rpm.	Specific ratio	Disposal page	Environment page	Mounting measurement page
									kW	m³/h	Pa (Ps)					
03 384 000	61,5	D	Total	■	NO	CE-mark	0.B4	VE 2200-C2	2,56	3257	1705	2853	1,02	0.B4	0.B4	0.B4
03 386 000	59,9	D	Total	■	NO	CE-mark	0.B4	VE 3000-C2	2,99	3596	1760	2929	1,02	0.B4	0.B4	0.B4
03 388 000	55,7	D	Total	■	NO	CE-mark	0.B4	VE 4000-C2	4,23	4668	1780	2929	1,02	0.B4	0.B4	0.B4
03 390 000	58,0	D	Total	■	NO	CE-mark	0.B4	VE 5500-C2	6,07	4741	2620	2936	1,03	0.B4	0.B4	0.B4
03 392 000	57,0	D	Total	■	NO	CE-mark	0.B4	VE 7500-C2	5,95	4383	2735	2951	1,03	0.B4	0.B4	0.B4
03 384 500	45,4	D	Total	■	NO	CE-mark	0.B4	VE 2200-C4	0,39	1720	370	1457	1,00	0.B4	0.B4	0.B4
03 386 500	50,4	D	Total	■	NO	CE-mark	0.B4	VE 3000-C4	0,43	1905	400	1455	1,00	0.B4	0.B4	0.B4
03 388 500	45,0	D	Total	■	NO	CE-mark	0.B4	VE 4000-C4	0,57	1913	470	1432	1,00	0.B4	0.B4	0.B4
03 390 500	49,8	D	Total	■	NO	CE-mark	0.B4	VE 5500-C4	0,78	2622	525	1419	1,00	0.B4	0.B4	0.B4
03 392 500	57,0	D	Total	■	NO	CE-mark	0.B4	VE 7500-C4	0,95	2710	705	1455	1,01	0.B4	0.B4	0.B4

■ No approved according to EU327/2011 ERP 2015  
 May be mounted on clean air side of Gram filter units as transport fan according to EU 327/2011 and EN 13349/2010

**Construction:**

Radial fan with closed fan wheel mounted in welded steel cabinet and with directly coupled motor.

**Model:** C (Transport of dust)

**Wheel:** Fan wheel type P-G, closed wheel with backward straight, self-cleaning blades  
 Static/dynamically balanced according to ISO 14694 (BV3 G 6.3)

**Housing:** Welded in 2mm steel plate

Fan housing can be mounted with various inlet positions (RD0, RD90, RD180, RD270)

Standard enamelling:

Powder enamelled for indoor mounting (RAL 5007), for outdoor placement galvanizing is also recommended

**Motor:** IE3, B5 flange motor without bimetallic sensor

3x400V 50Hz (three-phased motors can be frequency regulated)

**Fan type VE-C is also available galvanized and spark-protected (copper ring in inlet)  
 For ATEX fans - see group 10**

**Constructed and tested according to:**

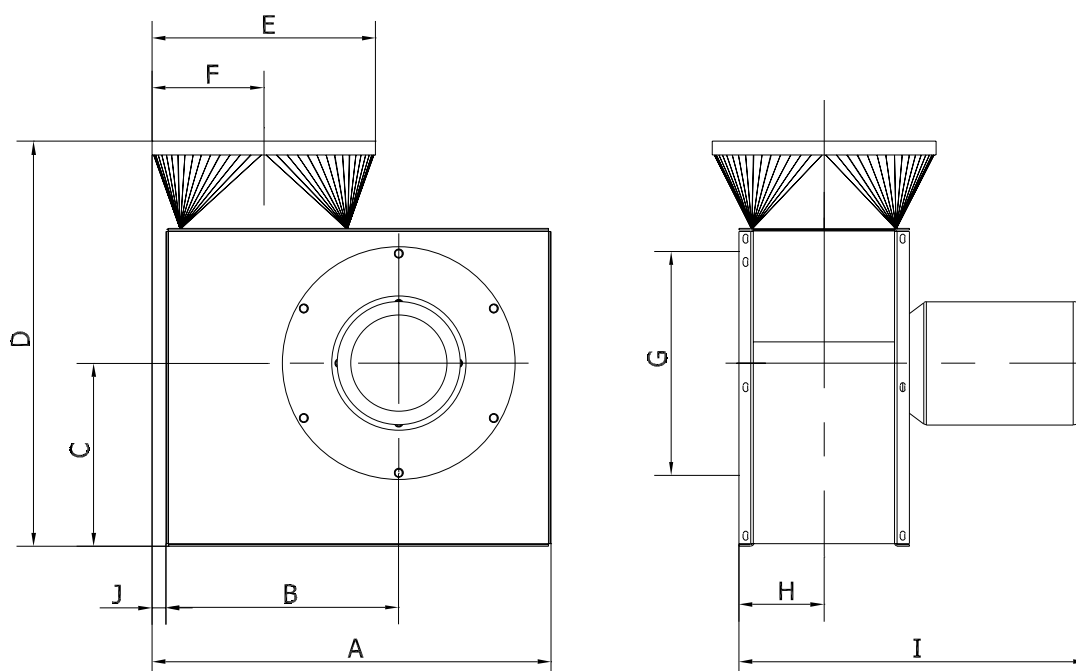
- Machine Directive 2006/42/EU
- Electromagnetic Compatibility (EMC) Directive 2004/108/EU
- Low Voltage (LVD) Directive 2014/35/EU
- Harmonized standards: EN 12100, EN 60204-1, EN ISO 13857, ISO 12499
- Further standards: ISO 3746, ISO 5801
- As well as: EU Regulation no. 327/2011 (ERP 2013 and 2015)



Type	Order no.	Volt [V]	[rpm.]	[kW]	Rated current (Amp)	Start current [ $I_L/I_N$ ]	Weight [kg]
VE 2200-C2	03 384 000	3x400	2-pole	2,20	■	■	57,0
VE 3000-C2	03 386 000	3x400	2-pole	3,00	■	■	67,0
VE 4000-C2	03 388 000	3x400	2-pole	4,00	■	■	88,0
VE 5500-C2	03 390 000	3x400	2-pole	5,50	■	■	110,0
VE 7500-C2	03 392 000	3x400	2-pole	7,50	■	■	130,0
VE 2200-C4	03 384 500	3x400	4-pole	0,55	■	■	47,0
VE 3000-C4	03 386 500	3x400	4-pole	0,55	■	■	50,0
VE 4000-C4	03 388 500	3x400	4-pole	0,55	■	■	60,0
VE 5500-C4	03 390 500	3x400	4-pole	0,75	■	■	66,0
VE 7500-C4	03 392 500	3x400	4-pole	1,10	■	■	84,0

■ See section "General information" conc. electro motors

Motor data  $\geq 0,75$ kW, 3x400V, according to IE3-motors.

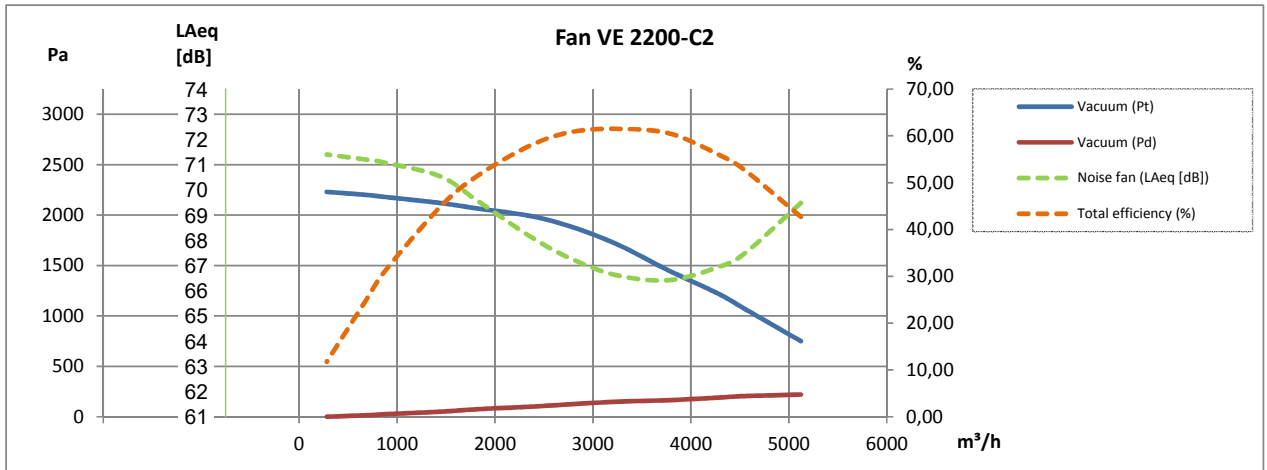


Type	Order no.	A	B	C	D	E	F	G	H	I	J
VE 2200-C2	03 384 000	767	465	363	780	∅315	194	315	144	543	0
VE 3000-C2	03 386 000	767	465	363	780	∅315	194	315	156	647	0
VE 4000-C2	03 388 000	859	519	408	903	∅400	216	400	159	616	0
VE 5500-C2	03 390 000	891	519	408	903	∅500	250	500	172	702	32
VE 7500-C2	03 392 000	891	519	408	903	∅500	250	500	191	777	31
VE 2200-C4	03 384 500	767	465	363	780	∅315	194	315	144	490	0
VE 3000-C4	03 386 500	767	465	363	780	∅315	194	315	156	513	0
VE 4000-C4	03 388 500	859	519	408	903	∅400	216	400	159	518	0
VE 5500-C4	03 390 500	891	519	408	903	∅500	250	500	172	557	32
VE 7500-C4	03 392 500	891	519	408	903	∅500	250	500	191	636	31

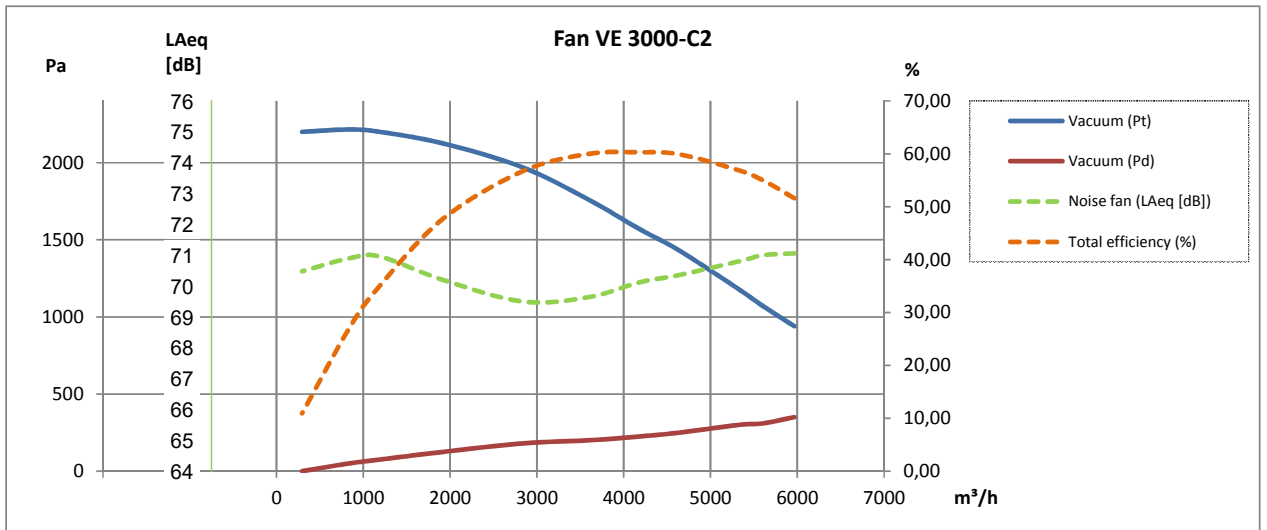
Please, note: Connection measurements are nipple measurements

Data is subject to alterations  
Rev. 01.22

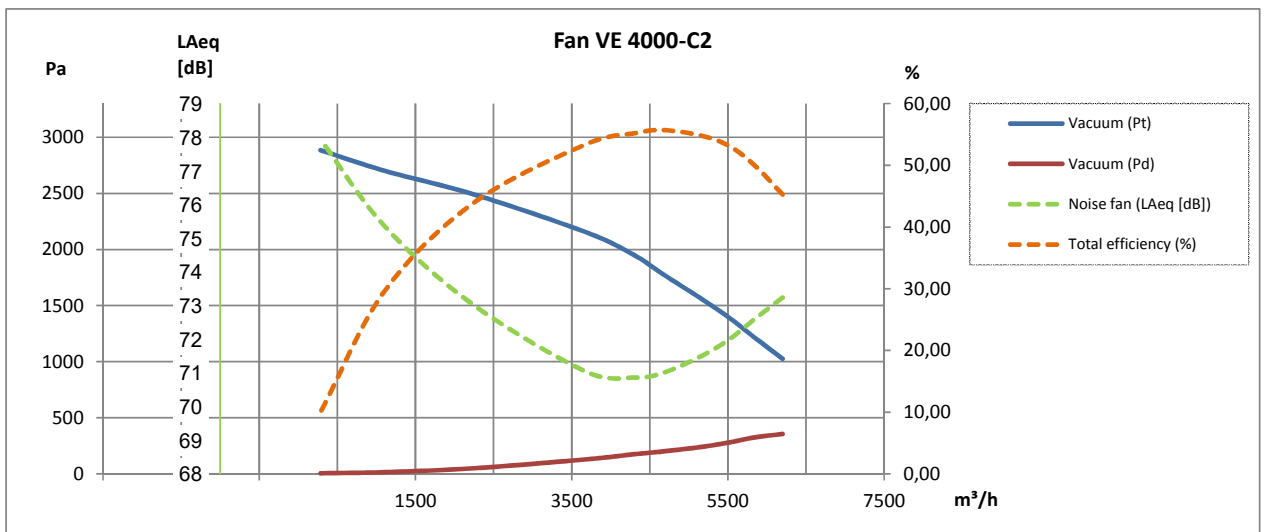
2-pole:



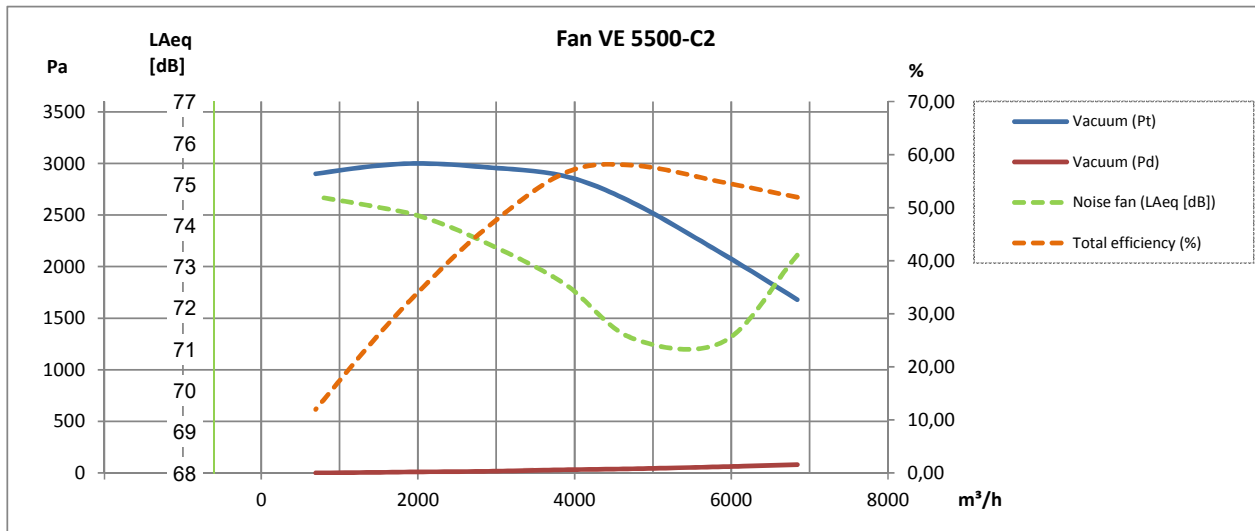
2-pole:



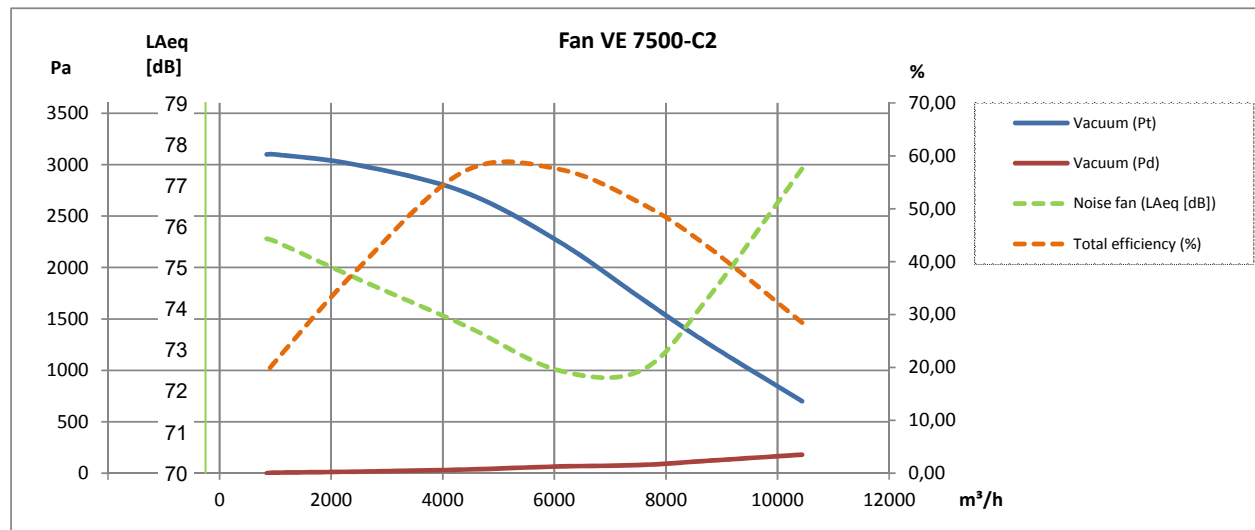
2-pole:



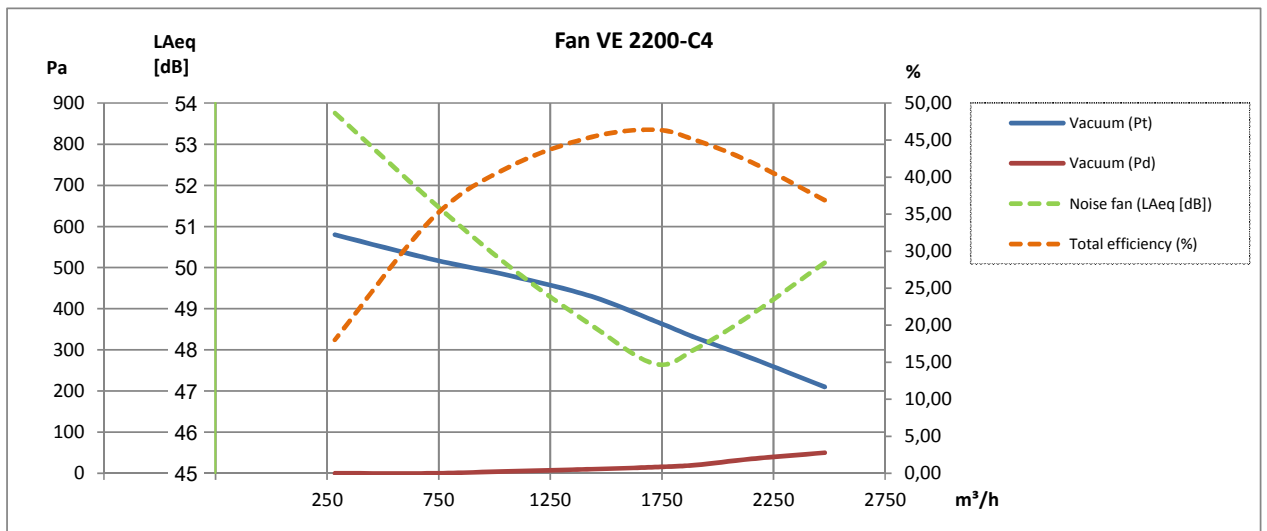
2-pole:



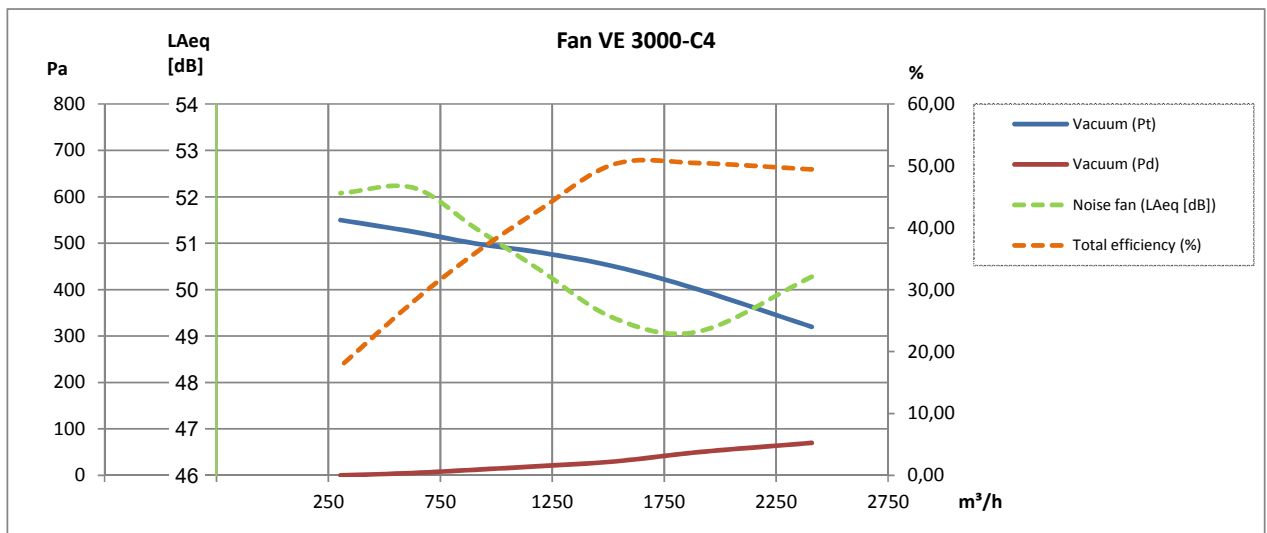
2-pole:



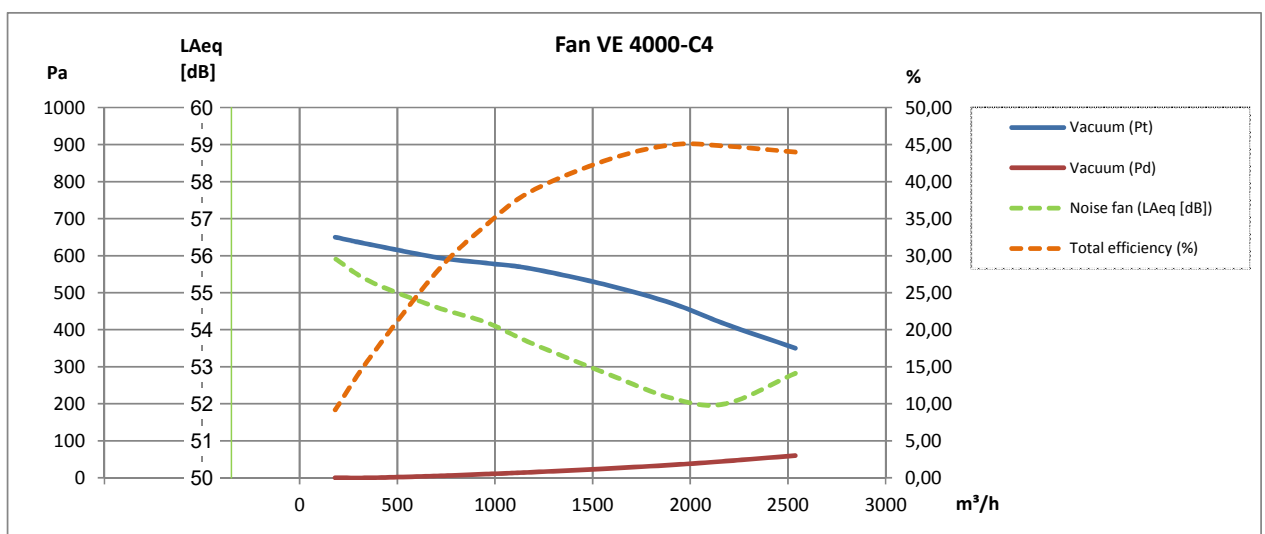
4-pole:



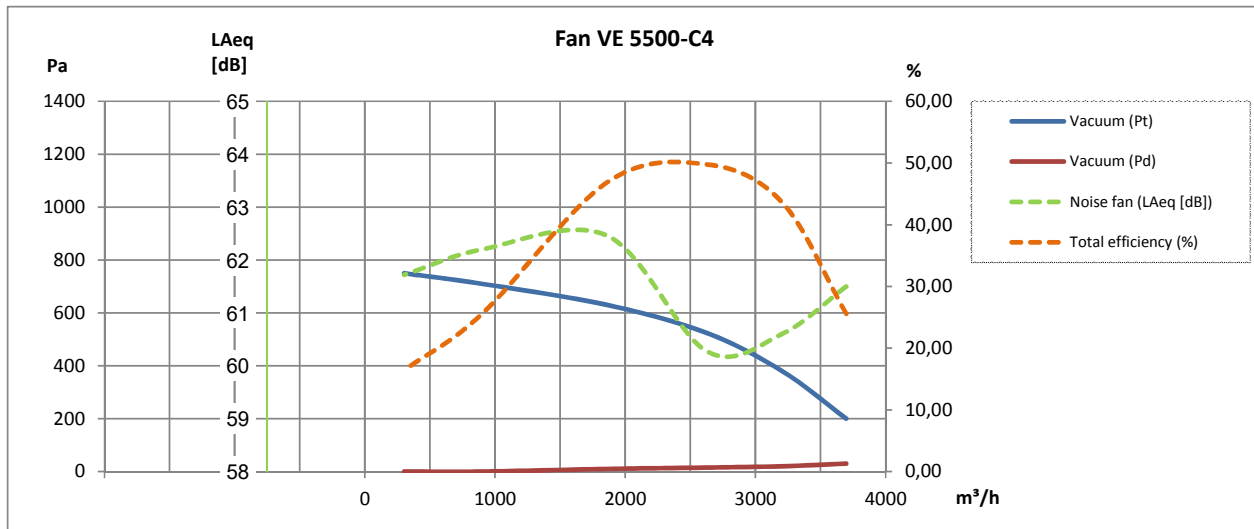
4-pole:



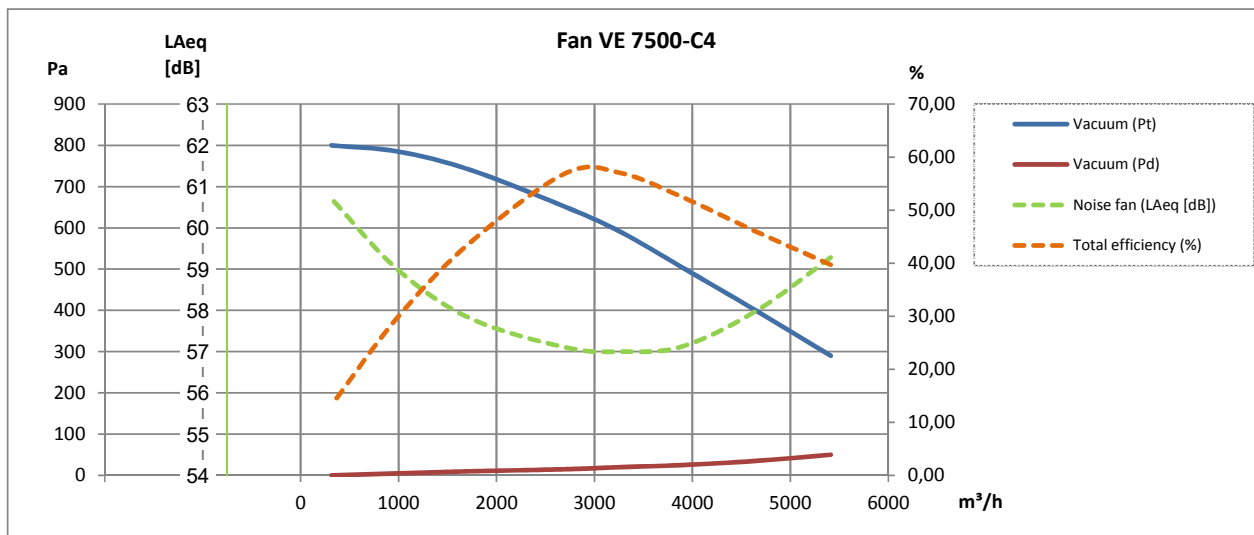
4-pole:



4-pole:



4-pole:



Description	Order no.
Additional payment for 60Hz operation (excl. possible special motor)	09 185 010

**All versions of fan type VE-C is also available i a galvanized version spark protection in copper (Cu) on inlet!**



#### Sound enclosure type VB\*:

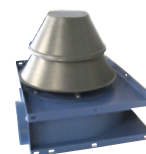
Type (Position RD0)	Order no.
VE 2200	03 396 000
VE 3000	03 397 000
VE 4000	03 398 000
VE 5500, VE 7500	03 399 000
Additional payment for sound enclosure type VB with side outlet, fan position RD0	03 550 000

\* Only for clean air transport



#### Weather-protected cover for air cooling intake and out for elektro motors:

Type	Order no.
VE 2000, VE 3000	03 235 800
VE 4000	03 240 800



#### Fan wheels:

Type	Hub [mm]	Fan type**	[Hz]	Order no.
VE 2200	ø24	C2	50	03 384 005
VE 3000	ø28	C2	50	03 386 005
VE 3900	ø28	C2	50	03 387 005
VE 4000	ø28	C2	50	03 388 005
VE 5500	ø38	C2	50	03 390 005
VE 7500	ø38	C2	50	03 392 005
VE 2200	ø19	C4	50	03 384 505
VE 3000	ø19	C4	50	03 386 505
VE 3900	ø19	C4	50	03 387 505
VE 4000	ø19	C4	50	03 388 505
VE 5500	ø19	C4	50	03 390 505
VE 7500	ø24	C4	50	03 392 505
VE 2200	ø24	C2	60	03 384 065
VE 3000	ø28	C2	60	03 386 065
VE 3900	ø28	C2	60	03 387 065
VE 4000	ø28	C2	60	03 388 065
VE 5500	ø38	C2	60	03 390 065
VE 7500	ø38	C2	60	03 392 065
VE 2200	ø24	C4	60	03 384 075
VE 3000	ø28	C4	60	03 386 075
VE 3900	ø28	C4	60	03 387 075
VE 4000	ø28	C4	60	03 388 075
VE 5500	ø38	C4	60	03 390 075
VE 7500	ø38	C4	60	03 392 075

\*\*Closed Transport (CT)





Photo:  
ABB Frequency converter  
type ACH 580

#### Further is available:

- Pressure guard
- Mounting fittings
- Vibrations absorbers
- Safety grid
- FLEX flexible connections
- Explosion-protected construction for application in ATEX zones
- Motor starter Y-D
- Frequency converter