



MTV 800

- Mobile service fan with complete equipment
- Fan type MTV 800: 0.55kW, 1x230V, 2-pole.
- Equipped with self-cleaning closed wheel for transport of smoke and dust
- Protection grid on inlet and outlet according to EN norm 13857
- Capacity: 1,000 m³/h at 750 Pa with the delivered equipment
- Solid fan housing
- With 5m cable with plug (230VAC), built-in switch and built-in motor protection
- With 5m extraction hose type S1 ø160mm with quick coupling and conical hood with magnet
- With 5m outlet hose type S1 ø160mm with quick coupling
- Weight: 38kg
- Delivered on transport trolley with 2 pcs. wheels, storage brackets for hoses and cable as well as carry and telescopic transport handles
- Order no. für MTV 800: 03 034 000



Feet

Unit is relieved on 3 feet, when it is not running on wheels.



Hood

Delivered with hood ø160mm with magnet on 5m hose. Storage on bracket.



Protection grid

Is standard delivered with protection grids on inlet and outlet.

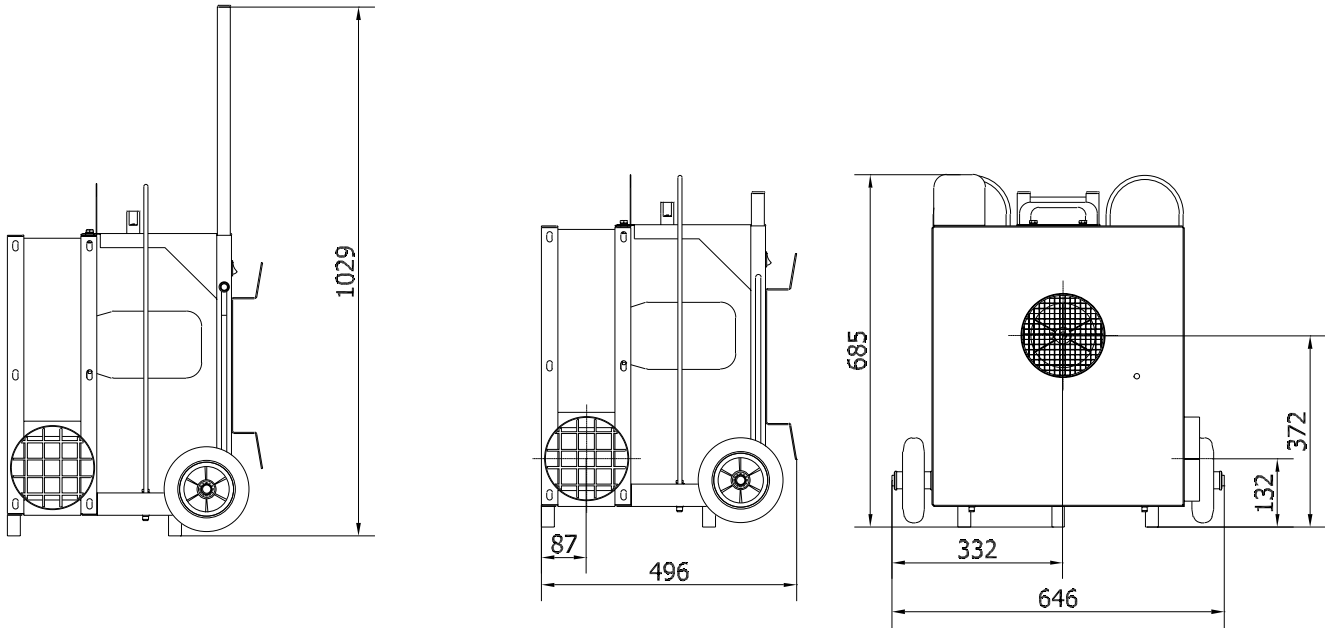


Handles

Delivered with carry and telescopic transport handles.

Colour: RAL 5007/7011 (structure)





2-pole:

